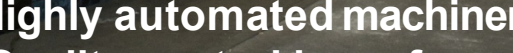




# STEEL MONOPOLES

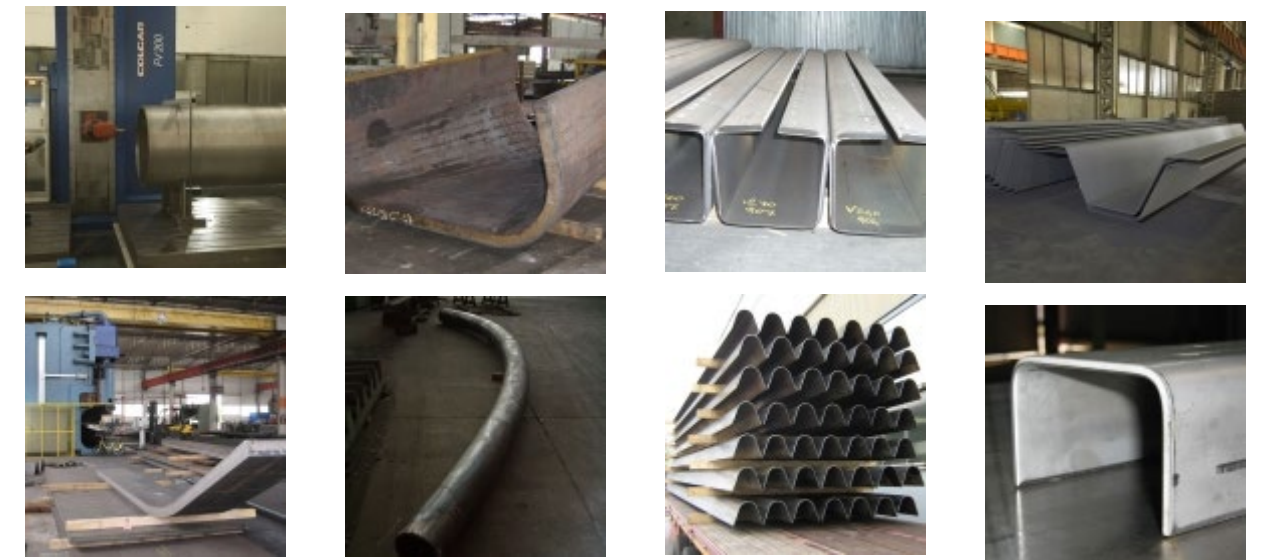
Bending operations are carried out via hydraulic presses of different type and dimensions. The hugest plant is represented by a 3000-ton press that makes it possible to bend elements with a max length of 15 m and has a power of 3000 ton; it can bend both carbon and stainless-steel plates.

The manufacturing activities include also the manufacture of corrugated steel sheets, hollow sections, MV/HV/EHV tubular steel monopoles and special press-bent items.



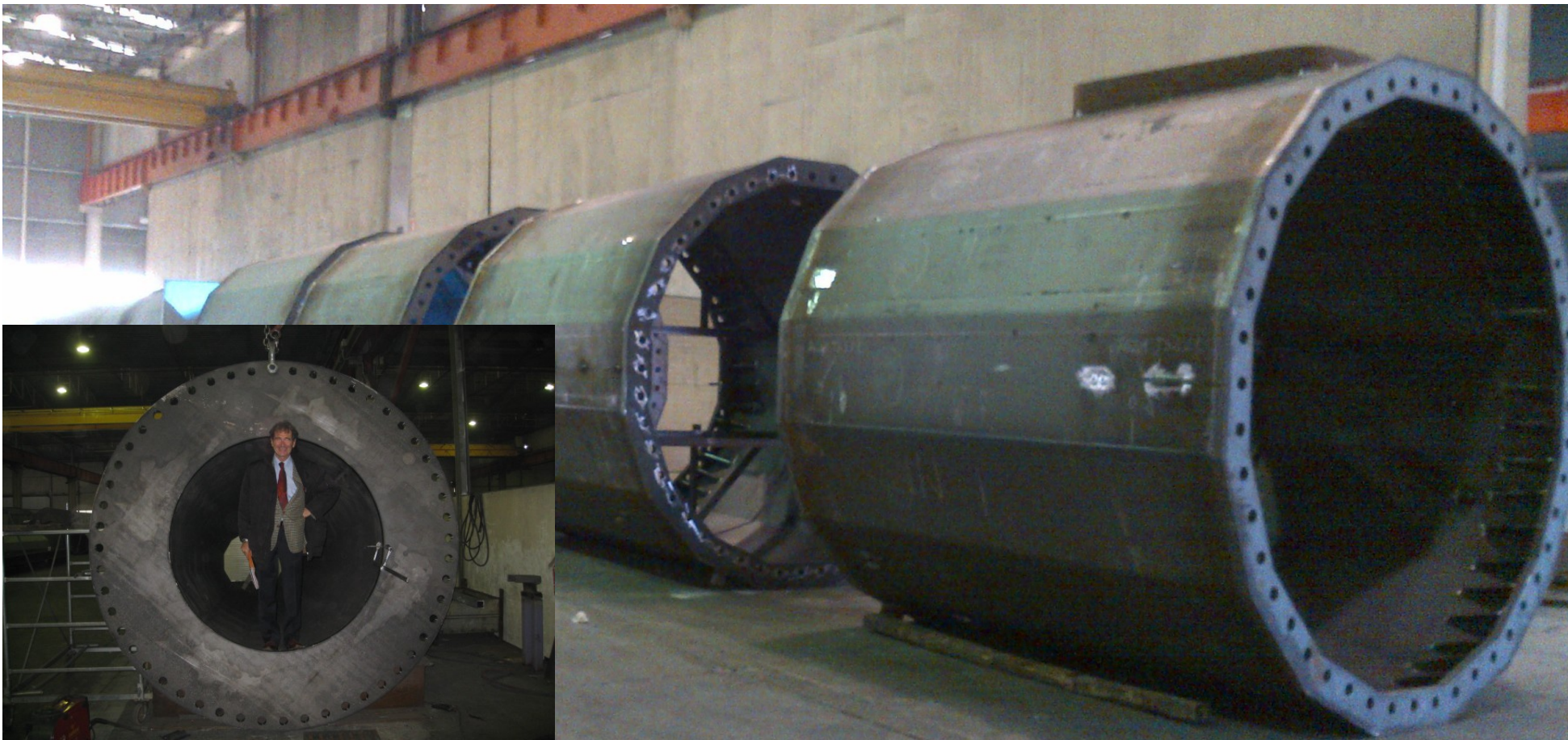
**Highly automated machinery.  
Quality control is performed  
by in-house qualified personnel.**

For machining / Welded beams activities. ACCS is equipped with two CNC milling and boring machines / The workshops are equipped with automatic and traditional welding installations. Most of the automatic welding installations are represented by machines for submerged-arc welding (twin arc & tandem) that can weld channels with lengths up to 1200 mm and heights up to 4100 mm. To perform cutting operations, ACCS is equipped with CNC plasma, oxygen-lance and mechanical cutting installations.





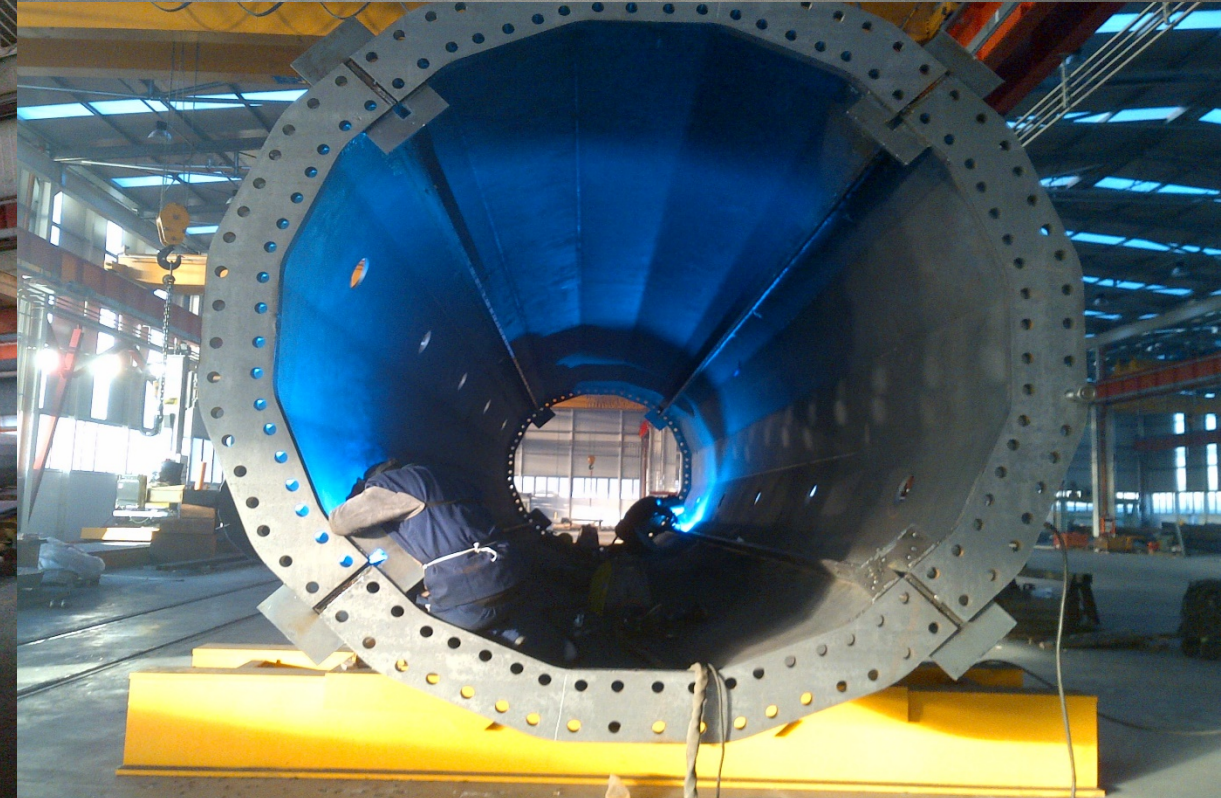
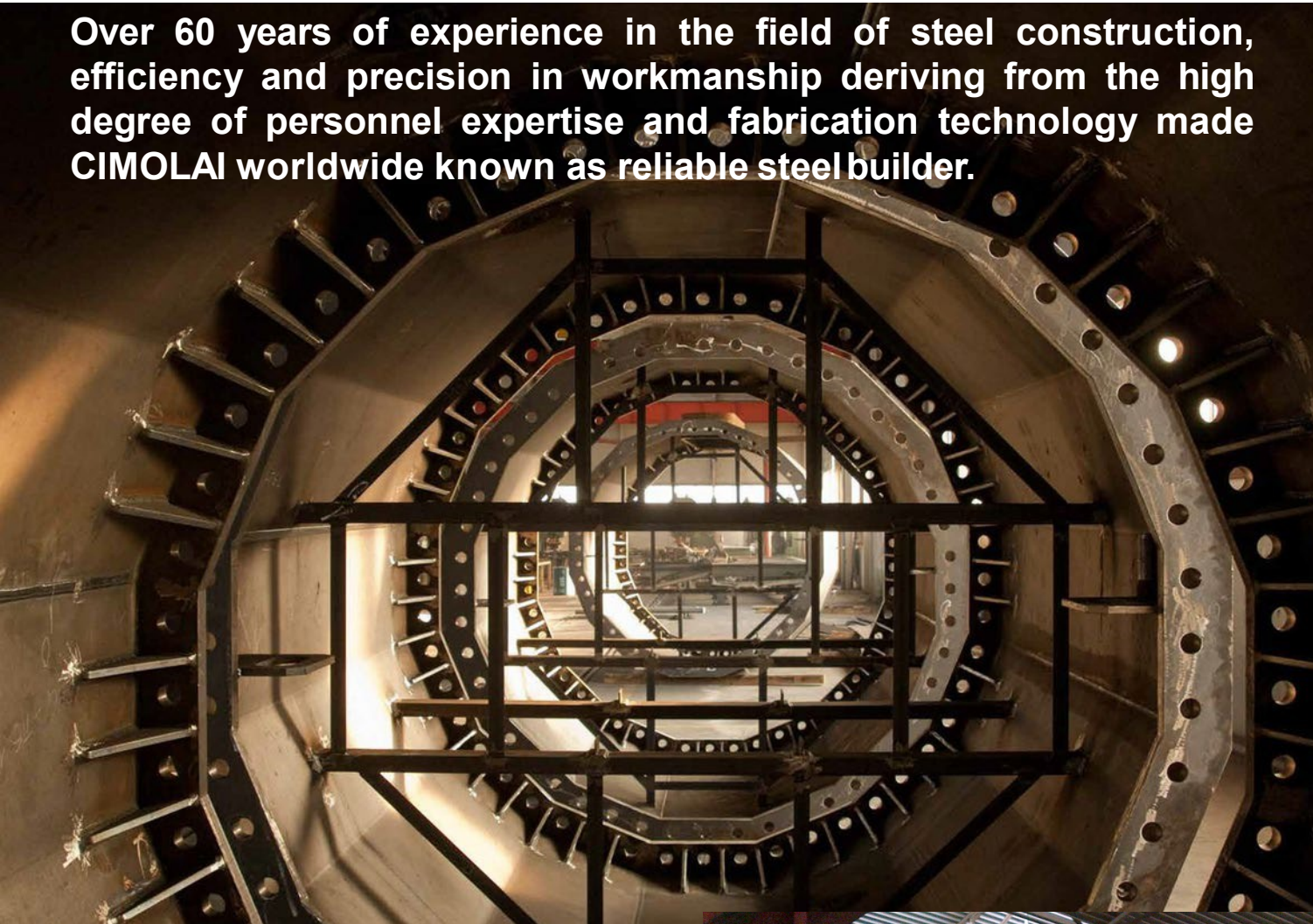
Polygonal steel monopoles for MV/HV/EHV electrical lines. Telecommunication and Wind farm Pylons





Polygonal steel monopoles for MV/HV/EHV electrical lines. Telecommunication and Wind farm Pylons

Over 60 years of experience in the field of steel construction, efficiency and precision in workmanship deriving from the high degree of personnel expertise and fabrication technology made CIMOLAI worldwide known as reliable steel builder.





Polygonal steel monopoles for MV/HV/EHV electrical lines. Telecommunication and Wind farm Pylons



WILORTON HOLDING INC. - GROUP OF COMPANIES - CIMOLAI STEEL MONOPOLES TECHNOLOGY, MV/HV/EHV TUBULAR STEEL MONOPOLES LEADER  
PHOTOGRAPHICALLY BRIEF PRESENTATION



Polygonal steel monopoles for MV/HV/EHV electrical lines. Telecommunication and Wind farm Pylons





Polygonal steel monopoles for MV/HV/EHV electrical lines. Telecommunication and Wind farm Pylons





Polygonal steel monopoles for MV/HV/EHV electrical lines. Telecommunication and Wind farm Pylons





Polygonal steel monopoles for MV/HV/EHV electrical lines. Telecommunication and Wind farm Pylons





Polygonal steel monopoles for MV/HV/EHV electrical lines. Telecommunication and Wind farm Pylons

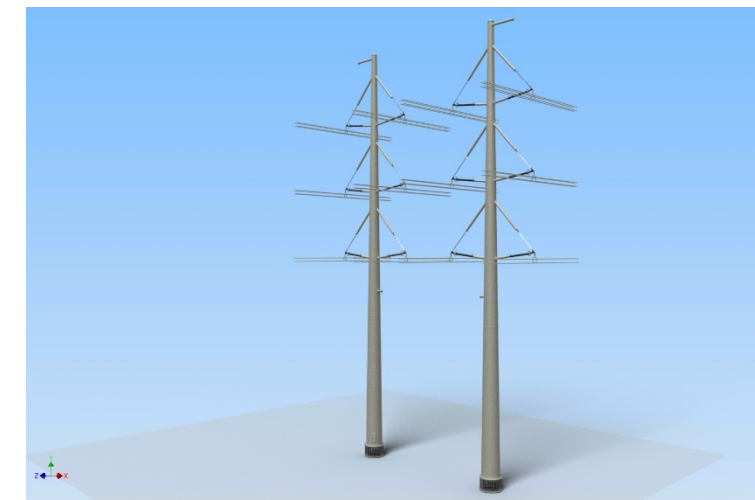
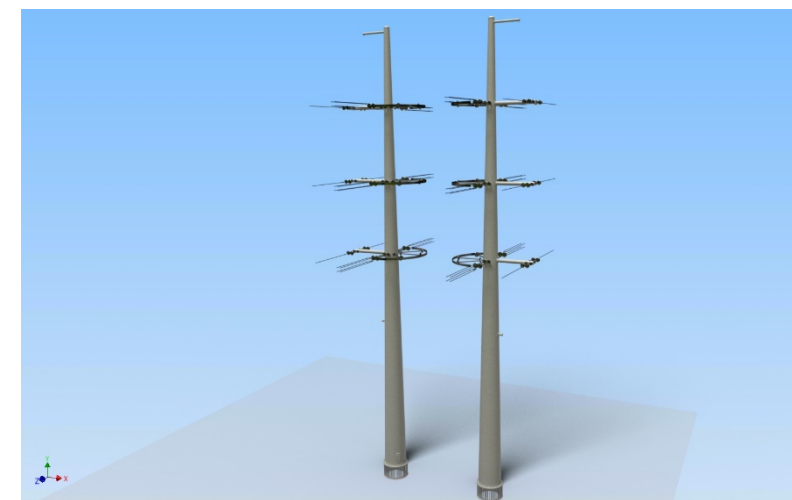
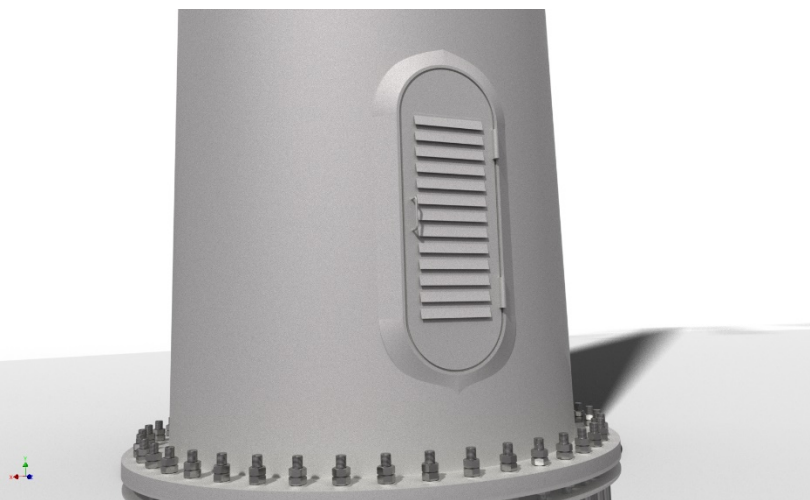
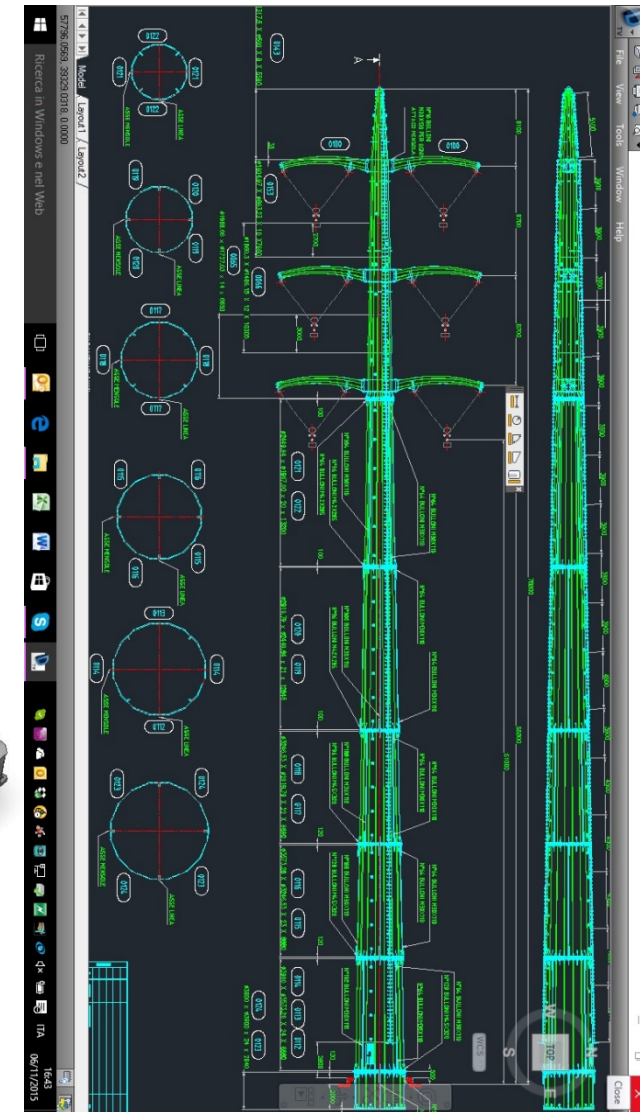
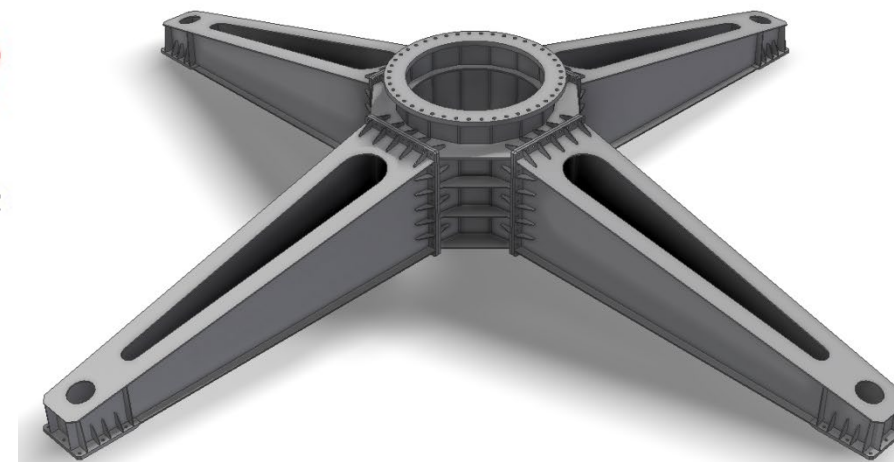
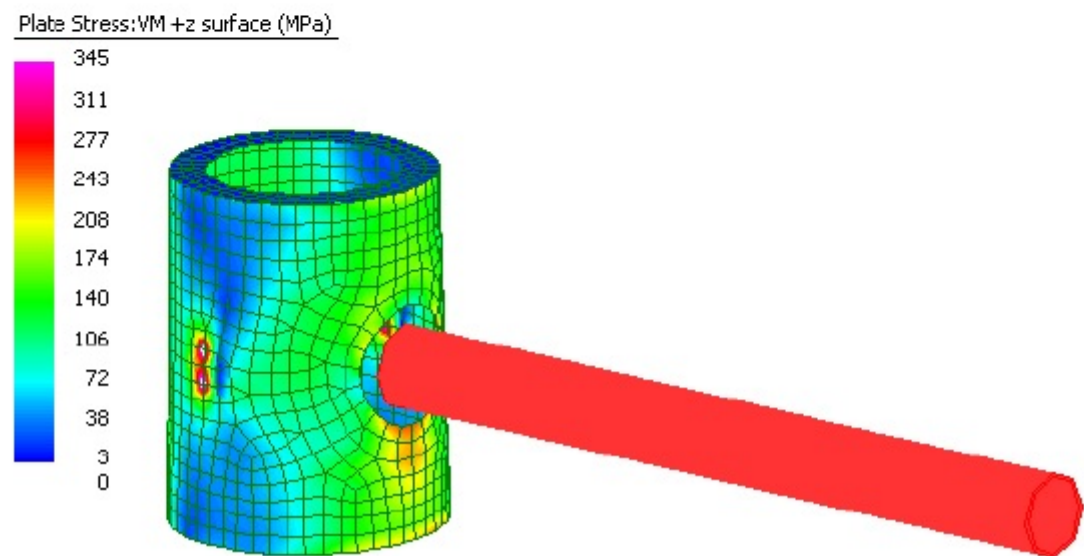
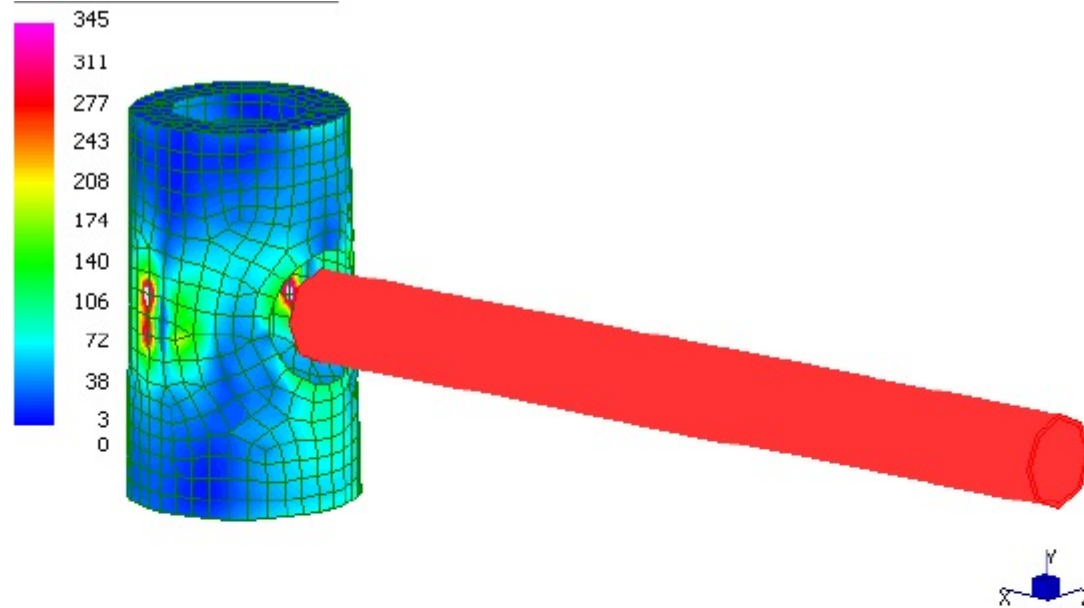
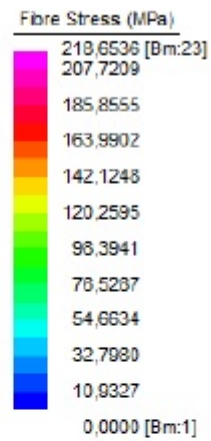


WILORTON HOLDING INC. - GROUP OF COMPANIES - CIMOLAI STEEL MONOPOLES TECHNOLOGY, MV/HV/EHV TUBULAR STEEL MONOPOLES LEADER



## Polygonal steel monopoles for MV/HV/EHV electrical lines. Telecommunication and Wind farm Pylons

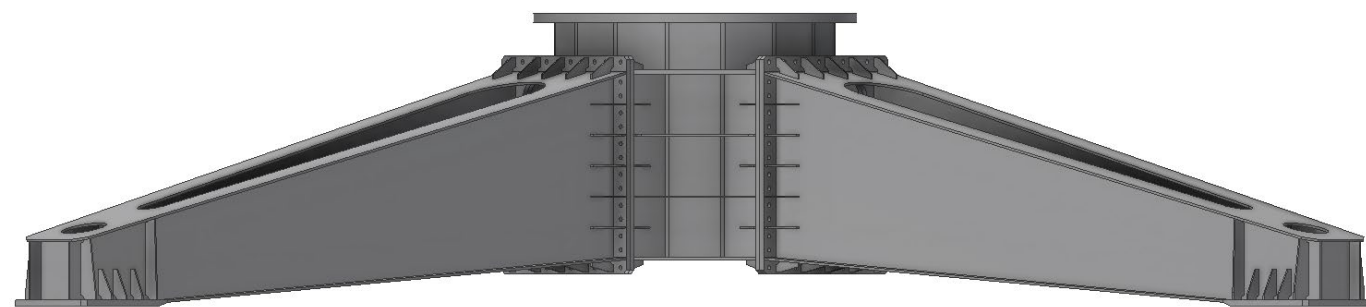
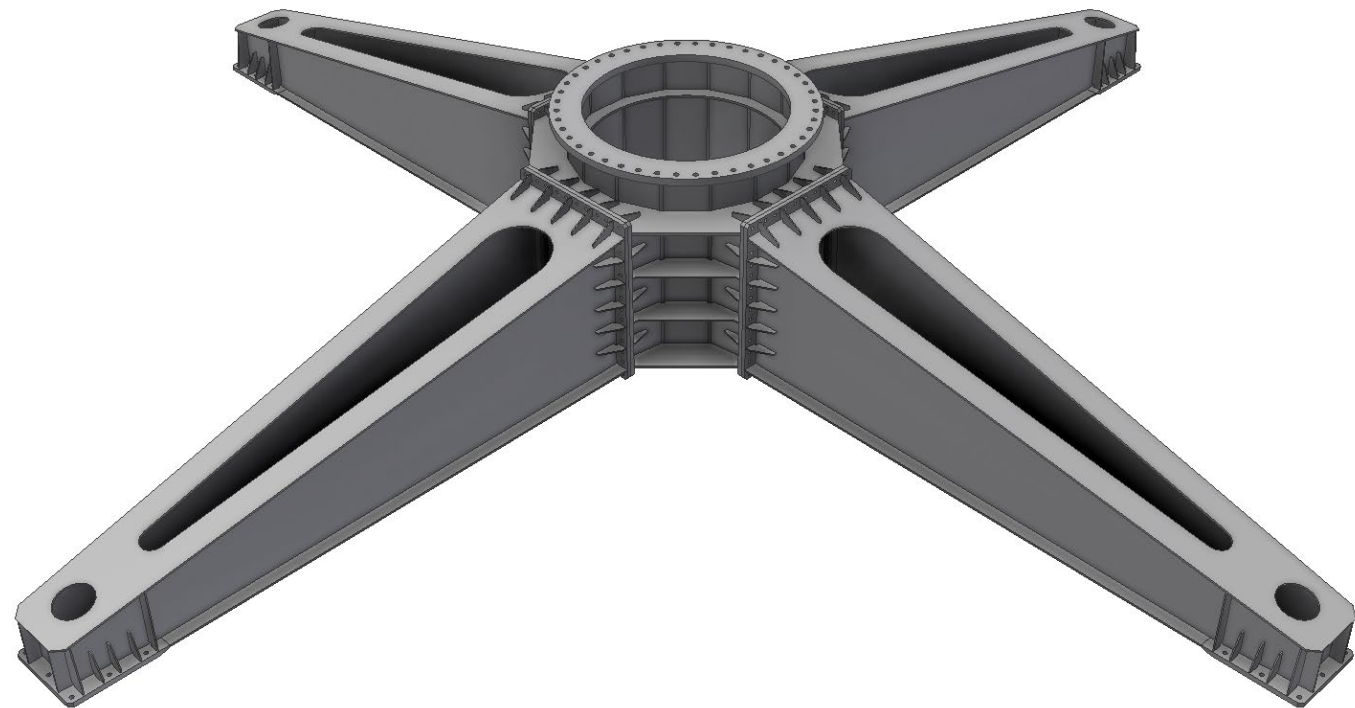
Strength Analysis





Polygonal steel monopoles for MV/HV/EHV electrical lines. Telecommunication and Wind farm Pylons

**NEW CONCEPT OF STEEL MONOPOLE FOUNDATION UP TO 132 kV**





# WORKSHOP BRIEF HISTORY

In 1949 Mr. Armando Cimolai, after years of work as simple worker, starts up his own activity, with the support of his wife Albina.

The first industrial development dates back to 1954, when the first structures for industrial buildings are fabricated and the first orders are signed with public boards. An in-house design department gives Cimolai the possibility of being not just a mere performer but of proposing alternative and innovative solutions.

In the '60s the family Cimolai completes the workshop in Viale Venezia, with installations and machines that were at the forefront, at the time.

In the '70s, the founder's sons too, Eng. Luigi Cimolai and Mr Roberto Cimolai, joined the company. This second generation helped the firm expand its market. To satisfy an ever growing demand, new workshops were set up in Polcenigo (1974), Roveredo (1986) and then the Centro Servizi in San Quirino (1991).

Over the years, the key elements of the company became the relatively low prices, the high quality and the respect of delivery time, leading Cimolai to being valued not only in Italy but in Europe and then worldwide too.

2006 is a crucial year for the ownership and the synergy of the firm. Cimolai SPA is transferred to Eng. Luigi, Cimolai Technology to Mr Roberto while the ownership of the Centro Servizi remained in the hands of the founders, Armando and Albina, and of their sons Luigi and Roberto.

Although the ownership is not the same for all companies, the group remains united to offer high quality services and products and therefore have a stronger impact and presence on the industrial market.

Over 60 years of experience in the production of steel construction for civil, industrial or naval applications, in Italy and worldwide.

Armando Cimolai Centro Servizi is specialized in the fabrication of steelwork structures and heavy steel construction works for civil and industrial buildings as well as of welded beams for the naval and off-shore industry.

The workshop in San Quirino (Pordenone) fabricated round and polygonal steel poles for telecommunication and high tension distribution, structures for fixed or floating bridges and welded beams.

The highly specialized staff can perform not only press-bending works, via hydraulic presses of various type and dimensions, for the civil and naval fields, but also mechanical machining for works installations of huge size, cutting, beveling as well as automatic and semi-automatic welding.

Quality of the products and precision in machining are just two of the distinctive features of ACCS.

The QA system at Armando Cimolai Centro Servizi SRL has been certified by SGS to comply with the standards UNI EN ISO 9001:2008 and UNI EN 3834-2 11/2006 and as transformation center in compliance with DM 14/01/2008. The quality certifications issued by boards such as Bureau Veritas, RINA, SOA Nord Alpi and Lloyd's Register are a proof of reliability, professionalism and high standards of quality.





**Armando Cimolai**  
Centro Servizi s.r.l.

**70.000 Sq.Mt**

**SAN QUIRINO PLANT**

The workshop in S. Quirino (Pordenone) is specialized in fabrication of steelworks for civil and industrial buildings and in finished and semi-finished products for the naval and maritime sectors.

The workshop in San Quirino (Pordenone) covers an overall area of 70000 square meters.

Armando Cimolai Centro Servizi SRL has been certified by the most important control boards, such as Lloyd's Register, Bureau Veritas, RINA, SGS and SOA Nord Alpi.

Besides, it has its own qualified inspectors and test labs (for non destructive and destructive tests).



## CERTIFICATES



**Armando Cimolai Centro Servizi Srl**

Zona Industriale - Via Masieres, 32 - 33080 San Quirino PN Italy - T.+39 0434 919292 - F.+39 0434 919266  
e-mail: [stefano\\_paier@cimolai.com](mailto:stefano_paier@cimolai.com) - <http://www.cimolaicentroservizi.com/en/>

[css@Wilorton.info](mailto:css@Wilorton.info) - <https://www.wilorton.com/>